

معدلات انتشار اضطرابات طيف التوحد في محافظتي

-

-

١

:

Autism Spectrum Disorders

(Szatmari , Bryson, Streiner, Wilson, Archer & Ryerse ,

Autism : .2000,p.1981)

Rett Asperger Disorder Disorder

Childhood Disintegrative Disorder

Pervasive Disorder

. (Mas & Wolfe, 2005) Developmental Disorder no-specified

Pervasive Developmental Disorders

. (Hansell& Damour 2005,p.448)

(Bertrand, Mars , Boyle , Bove ,
. Yeargin , &Decoufle,2001,p.115)

() (kanner)

. (Mash et al.,2005, p.284)

)

.(

. , (-)

. (Mash et al.,2005)

(Rice ,&

.Krapurkar,2003, p.49)

(Barbaresi, Katusic , Colligan ,

.Weaver , & Jacobson,2005,p.37)

(Ritvo, Freeman , Jorde, Jenson, McMahan &Ritvo,1989)

()

%

معدلات انتشار اضطرابات طيف التوحد في محافظتي

(Fombonne and

Mazaubrun,1992)

:

(:)

%

.(Shattuck, 2006 ,p. 1028)

(Barbaresi et

. al.,2005,p.37)

o

(Bertrand et al.,2001)

(:)

)

(

(Rice et al.,2003)

-

()

DSM-IV 1994

. (:)

(Barbaresi et

al.,2005)

DSM-

IV1994

معدلات انتشار اضطرابات طيف التوحد في محافظتي

(Newschaffer, Falb ,

& Gurney 2005)

. (Shattuck ,2006)

(Kogan, Blumberg , Schieve , Boyle , Perrin , Gandour ,&

VanDyck ,2009)

. (:)

:

(Posserud,

Lundervold , Lienand & Gillbery 2010)

%

%

:

)

.(

)

(

معدلات انتشار اضطرابات طيف التوحد في محافظتي

(-) .

:

(Mash et al.,2005,p. 286

.)

()

DSM-IV1994

() () .

() ()

:

:

•

(Shattuck et al.,2006)

(Rice ,2003)

•

•

(-)

: DSM-5

.(Tanguay,2011)

(Boris, Kaiser, Goldblatt, Elice, Edelson, Adams,
Feinstein,2007,p.1) (Klin, Chawarska , Paul, Rubin, Morgan ,
Weisner , & Volkmar, 2004,p.1981) (Ramos, Reichert , Smith ,
Silverman , Bepalova , Davis , & Buxbaum,2004,p.663)

:

:

(Hansell et al.,2005,p.449)

(Mash et

. al.,2005,p.289)

.()

:

معدلات انتشار اضطرابات طيف التوحد في محافظتى

%

" "

" "

.(Hansell et al.,2005,p.447)

. (Mash et al., 2005,p.291)

:

. (Hansell et

al.,2005,p.449)

:

.(Mash et al.,2005,p.293)

.

:

. (Dermot , Bowler, Saavalainen, Grice, &Gardiner,2000,p.663)

.

:

:

.(NICH,2006)

.

:

(Mash et al.,2005,p. 310)

:

(Ramos et al.,2004,p.673)

:

:

:

:

$$\begin{matrix} () & () \\ () + () & - \end{matrix}$$

:

)

.(

:

-
-
-
-
-

.

:

معدلات انتشار اضطرابات طيف التوحد في محافظتي

(DSM-IV-TR

.2000)

()

:

()

() - () + () .

()

()

()

د/ جيهان محروس د/ نجلاء الحبشى

--	--	--

()

()

معدلات انتشار اضطرابات طيف التوحد في محافظتي

()

--	--	--	--	--

()

معدلات انتشار اضطرابات طيف التوحد في محافظتي

()

د/ جيهان محروس د/ نجلاء الحبشى

()

()

--	--	--	--	--

معدلات انتشار اضطرابات طيف التوحد في محافظتي

:

()

:

(,):

(,):

(,):

(,):

(,):

(DSM-IV

: RT, 2000)

:

()

:

()

:

:

)

(

:

)

(

:

:

:

":

"

:

()

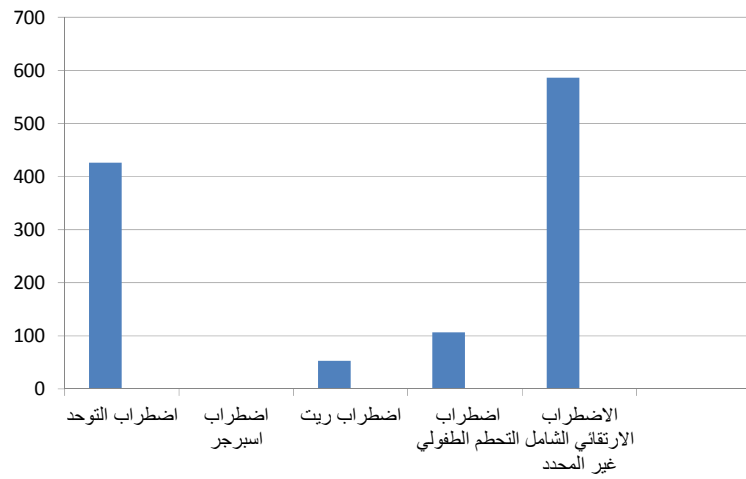
()

()

()

()

معدلات انتشار اضطرابات طيف التوحد لدي العينة ككل لكل ١٠٠٠٠



(Kogan et

(Shattuck ,2006)

al.,2009)

(Barbaresi et al.,2005)

(Bertrand et al.,2001)

:

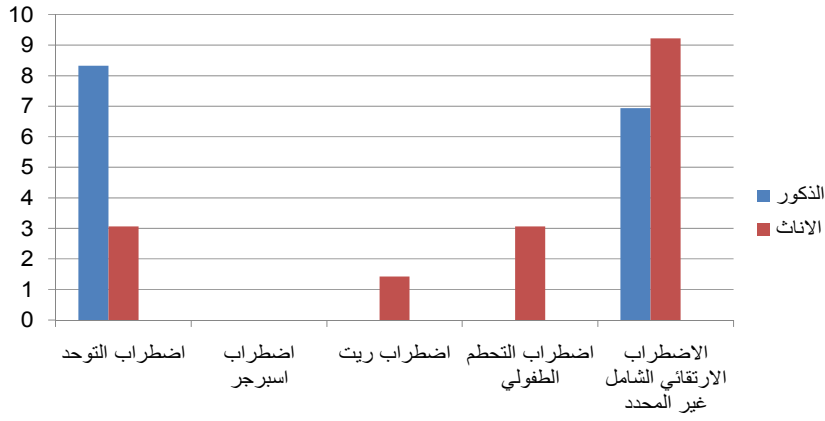
"

"

()

الاضطراب الارتقائي الشامل غير المحدد	اضطراب التحطم الطفولي	اضطراب ريت	اضطراب اسبيرجر	اضطراب التوحد	العينة
%	%	%	%	%	
%	%	%	%	%	

معدلات انتشار اضطرابات طيف التوحد لدى الذكور والإناث



(Fombonne and

(Rice et

. (Kogan et al.,2009)

Mazaubrun,1992)

al.,2003)

معدلات انتشار اضطرابات طيف التوحد في محافظتي

"

"

()

()

:

.() .

. : .

. () .

: .

.

. () .

: .

: :

American Psychiatric Association. (2000). Diagnostic and statistical

manual of mental disorders (5th ed.).
Washington, DC: Author.

Barbarese, J., Katusic, K., Colligan, C., Weaver, L., &
Jacobson, J. (2005).

The incidence of autism in Olmsted county,
Minnesota, 1979-1997.

Journal of Arch pediatradolesc, 159, 37-44.

Bertrand, T., Mars, A., Boyle, C., Bove, F., Yeargin,
A., & Decoufle P. (2001).

Prevalence of autism in a united states population :
the brick township , new
jersey investigation . Journal of Pediatrics
,108(5), 1155-1161.

Boris,M.,Kaiser,C.,Goldblatt,A.,Elice,W.,Edelson,M.,A
dams,B.,Feinstein,L.

(2007).Effect of pioglitazon Treatment on
behavioral symptoms in autistic

children. Journal of neuroinflammation ,4:3.

Dermot ,M .,Bowler, A .,Saavalainen, p.,Grice,s.,
&Gardiner ,M.(2000).Memory

illusions :False recall and and recognition adults
with Asperger's syndrome

. Journal of Abnormal psychology, 109(4),663-
672 .

Fombonne ,E & Mazaubrun ,C.(1992).Prevalence of
infantile autism in four

French regions. Journal of social psychiatry and
psychiatric epidemiology ,

27,203-210 .

Hansell , J. Damour, L.(2005).Abnormal psychology
.United States of America ,john Wiley & sons ,
inc .

Kline ,A., Chawarska ,K., Paul, R., Rubin, E., Morgan
,T. ,Weisner ,L.,&

Volkmar,F. (2004).Autism in a 15- Month- old
child . journal of American

psychiatry,

161,1981-1988.

Kogan ,D., Blumberg ,J., Schieve ,A. ,Boyle , A ., Perrin
,M .,Gandour , R.,

Singh ,K., Strickl ,B.,& VanDyck ,C.(2009).
Prevalence of parent –reported

diagnosis of autism spectrum disorders among
children in the US . Journal

of pediatrics, 124(5), 1395 –1403.

Mash , J.,& Wolfe ,A. (2005). Abnormal psychology
.third ed. Australia :

Thomson wads worth .

National Institute of Child Health and Human
Development .(2006).Autism

overview: what we know,05-5592 .NIH
publishing, DC: Author.

Newschaffer ,J., Falb ,D.,& Gurney ,G.(2005).National
autism Trends from

united states special education data . journal of
pediatrics ,115(3), 277-282.

Posserud , M. ,Lundervold , J., Lienand , A., & Gillberg
,C.(2010).The

prevalence of autism spectrum Disorders: impact
of instrument and non –

Response bias. Journal of social psychiatry and
psychiatric epidemiology,

45(3),319-327.

Ramoz , N., Reichert , G .,Smith , J ., Silverman , M .,
Bespalova , N., Davis ,

L., & Buxbaum , D .(2004).Linkage and
association of the mitochondrial

aspartate/ glutamate carrier SLC25A12 Gene
with autism . journal of

American Psychiatry, 161,662-669 .

Rice, C., & Krapurkar, T. (2003). Prevalence of Autism in -AUS Metropolitan

Area. Journal of AMA, 289 (1), 49-55 .

Ritvo, E., Freeman, B., Jorde, L., Jenson, W.,
McMahon, W.,

Petersen, P., & Ritvo, A. (1989). The UCLA –
University of Utah

Epidemiologic Survey of Autism Prevalence
Journal of American

Psychiatry, 146:194-199.

Shattuck, P. (2006). The Contribution of Diagnostic
Substitution to The

Growing Administrative Prevalence of Autism in
U.S. Special Education .

Journal of Pediatrics, 116:1028-1037.

Szatmari, P., Bryson, E., Streiner, L., Wilson, F.,
Archer, C., Ryerse, C.

(2000). Two Year Outcome of Preschool
Children With Autism or

Asperger's Syndrome. Journal of American
Psychiatry, 157: 1980-1987 .

Tanguay,E.(2011).Autism in DSM-5. American journal
of psychiatry,168(11),

1142- 1144.

Study Abstract

**Prevalence Rates of Autism Spectrum Disorders at
Wadi Aldawasser and**

AL- Kharj Towns in Kingdom of Saudi Arabia

Naglaa Mahmoud Elhabshy
Gehan Ali Gamal Eldin Prof. Assistant
Prof. Assistant

Special Education Department
Psychology Department

Faculty of Art-Menoufia University

Albaha University Salman bin Abdul-Aziz University

This recent study carried out to investigate the prevalence rates of autism spectrum disorders in Saudi Arabia and comparison prevalence rates among males and females, also to prepare a diagnostic checklist for differentiating sub-groups of autism spectrum disorders. The researchers in that study prepared a checklist to evaluate the child behavior relating to autism spectrum disorders. To valid this checklist, the assertive factor analysis used. The study reveals that there is a remarkable fulfillment of items of all sub scales checklist. To reliable the checklist, Alfa Cronbach's Equation be used. It results a sufficient reliability of the checklist. The study results reveal an increasing of the prevalence rates of autism spectrum disorders, especially, autism disorder and the comprehensive developing non-specified disorder. The prevalence rates of such disorders increase among males comparison females. The results show also remarkable differences between autism disorder and the pervasive developing non-specified disorder relating to severity of the symptoms upon the sub- scale of stereotype behavior and social

interaction .